

# 1-100 Quarter-Turn Pr20.1 L18

Tool operable, IP65/67, Optional pre-assembly

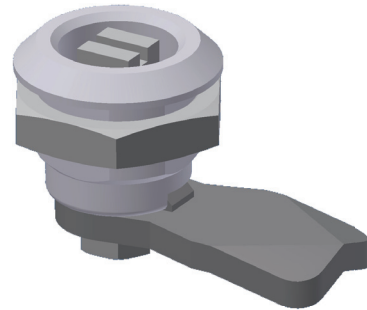


## Product Notes:

- Components can be pre-assembled by DIRAK upon request
- A pre-assembled Quarter-Turn can be installed through the cutout
- Extended housings - see Product System 1-110
- RH and LH application
- Other zinc die - see Product System 1-100.01
- Tool-less installation - see Product System 1-083SL and 1-082SL
- Stainless steel - see Product System 7-080 and 7-080.01

## Material:

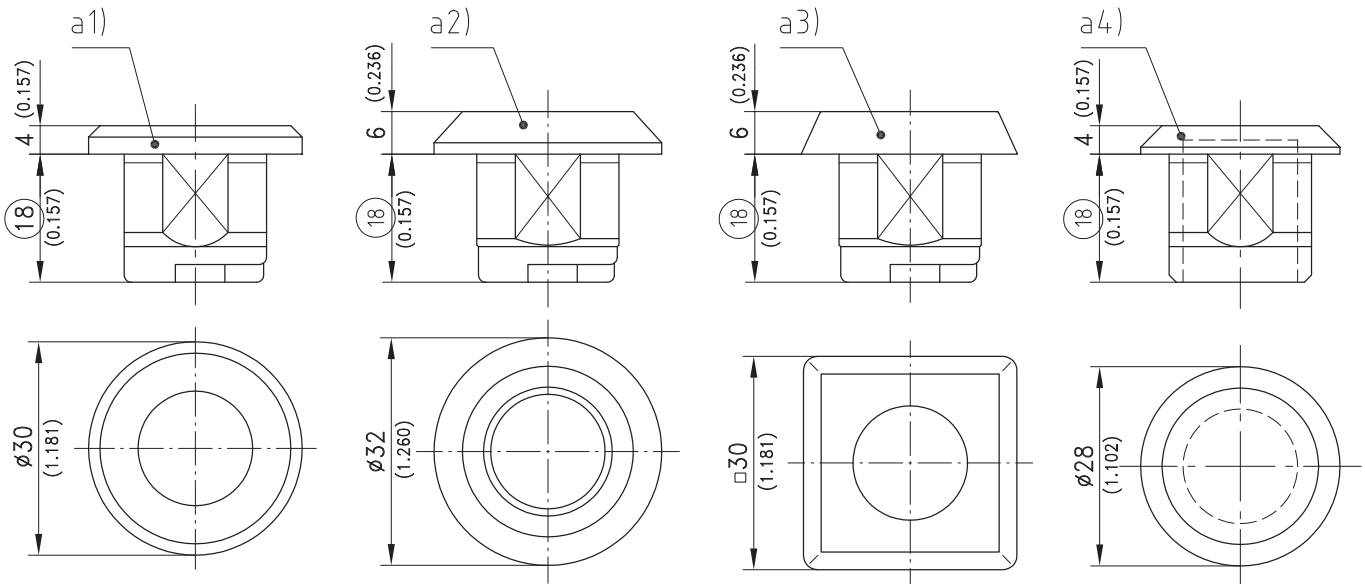
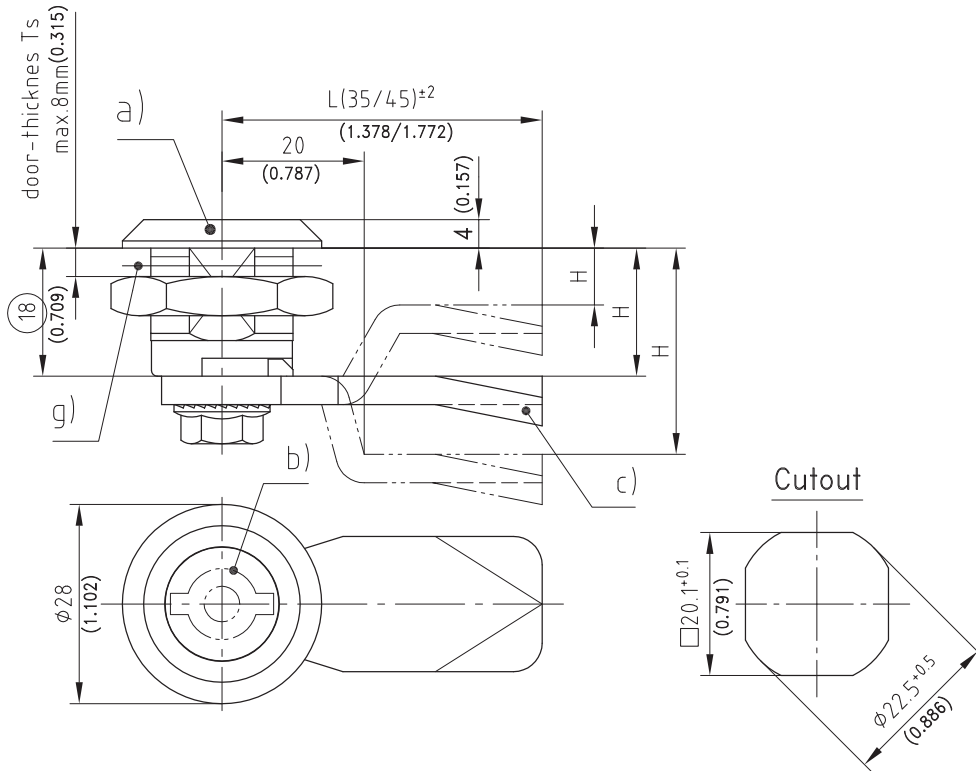
- **Housing:** Zinc Die, Chrome Plated or Black or PA, Black
- **Nuts:** Steel, Zinc Plated
- **Grounding nut:** Zinc Die, Untreated
- **Grounding clip:** Stainless Steel



a) Housing Ø28	Zinc Die Chrome Plated	Zinc Die Black	PA Black	See Page
with nut	200-9001	200-9048	200-9003	
with grounding nut	200-9002	200-9049		
with nut and grounding clip	200-9062	200-9063	200-9004	
a1) Housing Ø30x4				
with nut	200-9045	200-9054		
with grounding nut	200-9046	200-9055		
a2) Housing Ø32x6				
Housing with nut	200-9005	200-9050	200-9007	
with grounding nut	200-9006	200-9051		
with nut and grounding clip			200-9008	
a3) Housing □30x6				
with nut	200-9009	200-9052		
with grounding nut	200-9010	200-9053		
a4) Blind housing Ø28x4				
with nut		235-9209		
b) Inserts				01.98, 01.99
c) Cams				01.101
c1) Special cams				01.102, 01.103, 01.104
d) Keys				10.18, 10.20
e) Other accessories				01.105, 01.106, 01.107
Optional:				
Water and dust tight according to IP65 by:				
f) O-ring 12x2mm	200-1001	200-1001	200-1001	
g) Flat external seal	200-0901	200-0901	200-0901	
Water and dust tight according to IP67 by additional:				
h) O-ring 10x2mm	200-1002	200-1002	200-1002	
Assembling of cam, without O-ring	200-0001	200-0001	200-0001	
Assembling of cam, with O-ring	200-0002	200-0002	200-0002	
Assembling cam 90° to handle without O-ring	200-0019	200-0019	200-0019	
Assembling cam 90° to handle with O-ring	200-0033	200-0033	200-0033	

# 1-100 Quarter-Turn Pr20.1 L18

Tool operable, Optional grounding nut, Optional pre-assembly



	<b>See Page</b>
<b>b) Inserts</b>	<b>01.98</b>
<b>c) Cams</b>	<b>01.101</b>
<b>c1) Special cams</b>	<b>01.103, 01.104, 01.48</b>